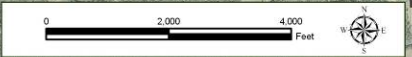


**Legend**

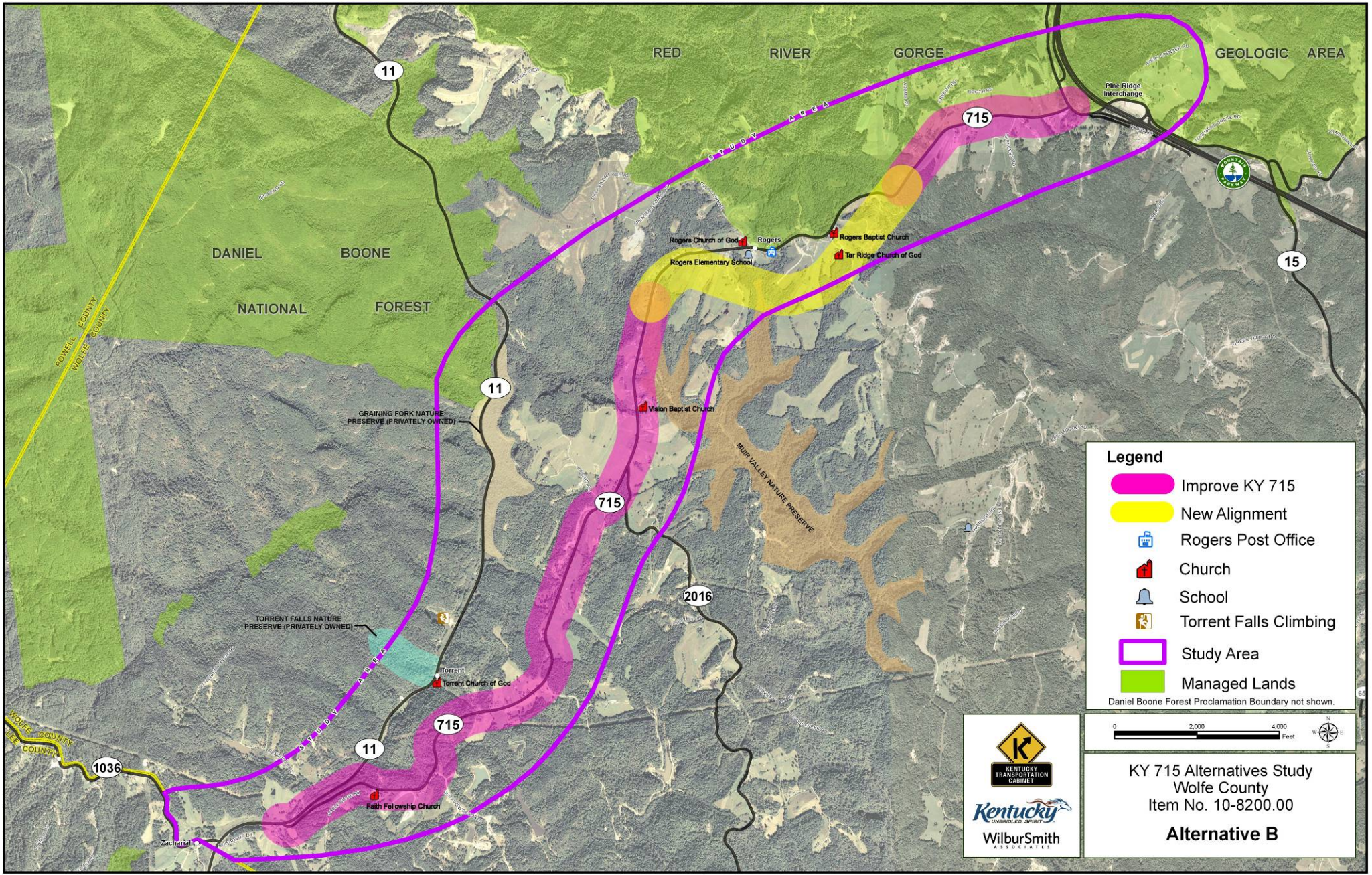
- Improve KY 715
- Rogers Post Office
- Church
- School
- Torrent Falls Climbing
- Study Area
- Managed Lands

Daniel Boone Forest Proclamation Boundary not shown.



KY 715 Alternatives Study  
 Wolfe County  
 Item No. 10-8200.00  
**Alternative A**





**Legend**

- Improve KY 715
- New Alignment
- Rogers Post Office
- Church
- School
- Torrent Falls Climbing
- Study Area
- Managed Lands

Daniel Boone Forest Proclamation Boundary not shown.

**Kentucky**  
COMMONWEALTH OF KENTUCKY

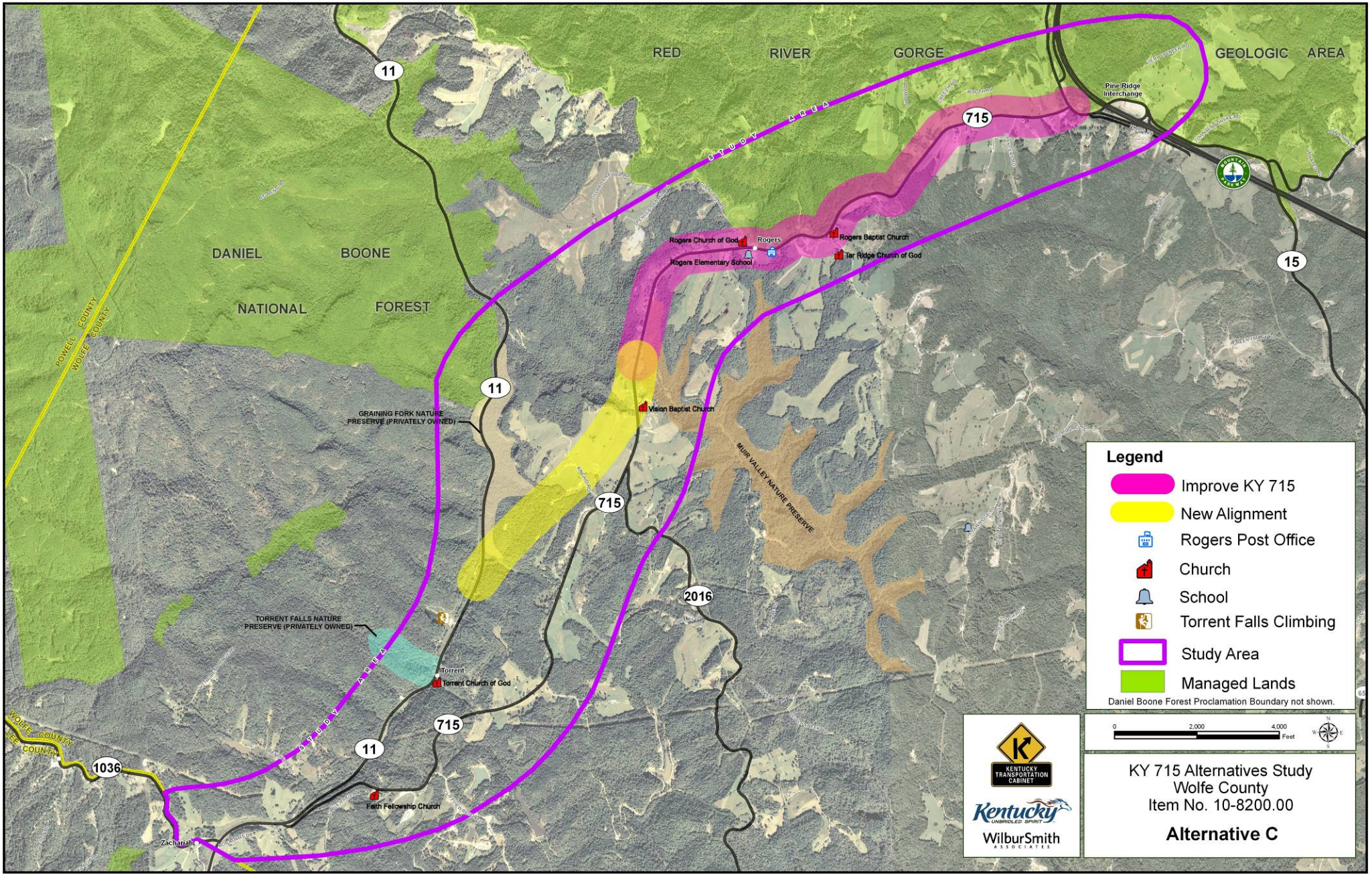
**WilburSmith**  
ASSOCIATES

0 2,000 4,000 Feet









KY 715 Alternatives Study  
Wolfe County  
Item No. 10-8200.00

**Alternative B**

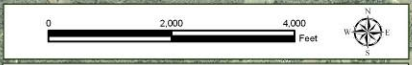




**Legend**

-  Improve KY 715
-  New Alignment
-  Rogers Post Office
-  Church
-  School
-  Torrent Falls Climbing
-  Study Area
-  Managed Lands

Daniel Boone Forest Proclamation Boundary not shown.



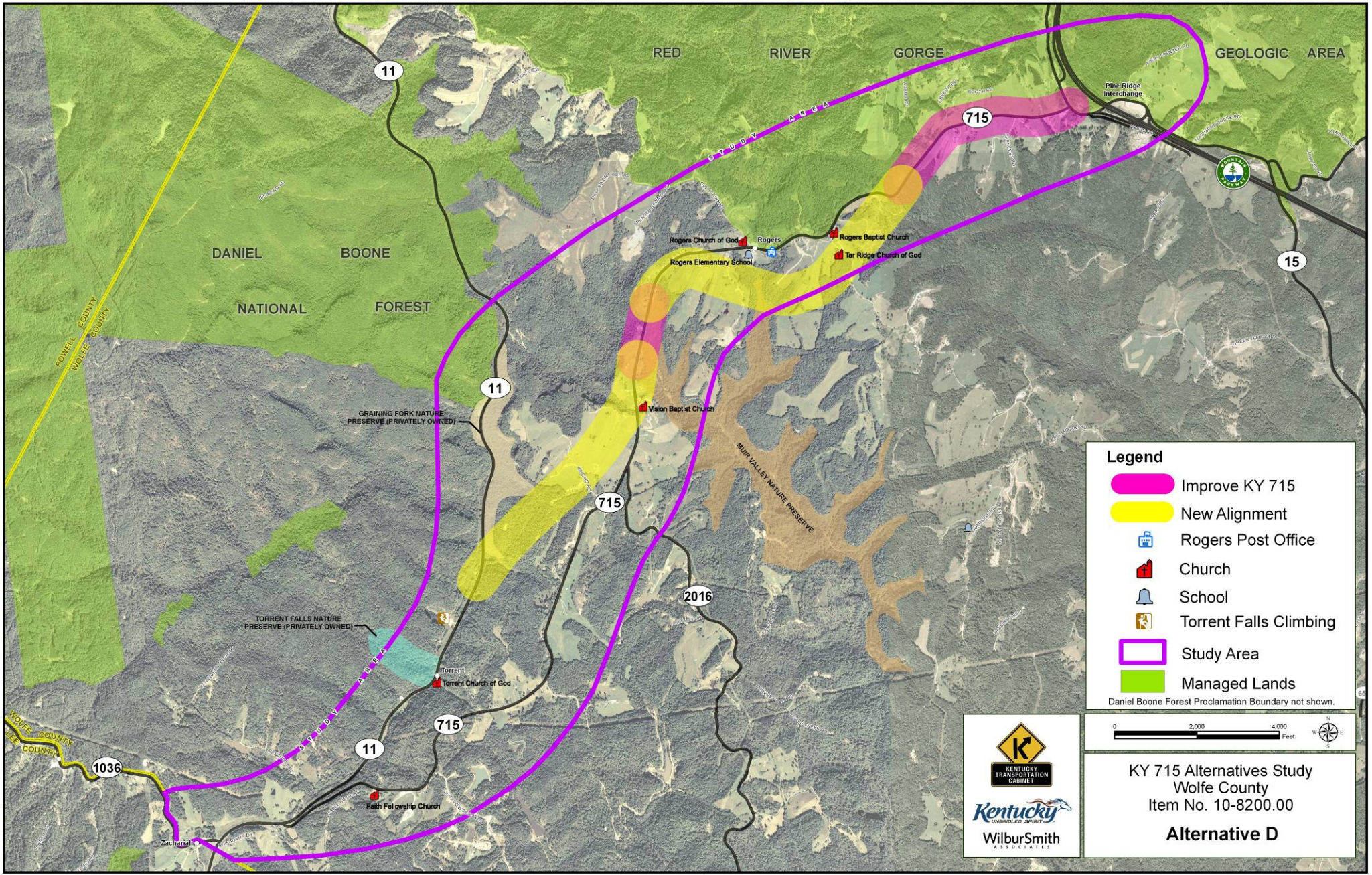

**Kentucky**  
COMMONWEALTH OF KENTUCKY











KY 715 Alternatives Study  
Wolfe County  
Item No. 10-8200.00

**Alternative C**





**Legend**

-  Improve KY 715
-  New Alignment
-  Rogers Post Office
-  Church
-  School
-  Torrent Falls Climbing
-  Study Area
-  Managed Lands

Daniel Boone Forest Proclamation Boundary not shown.



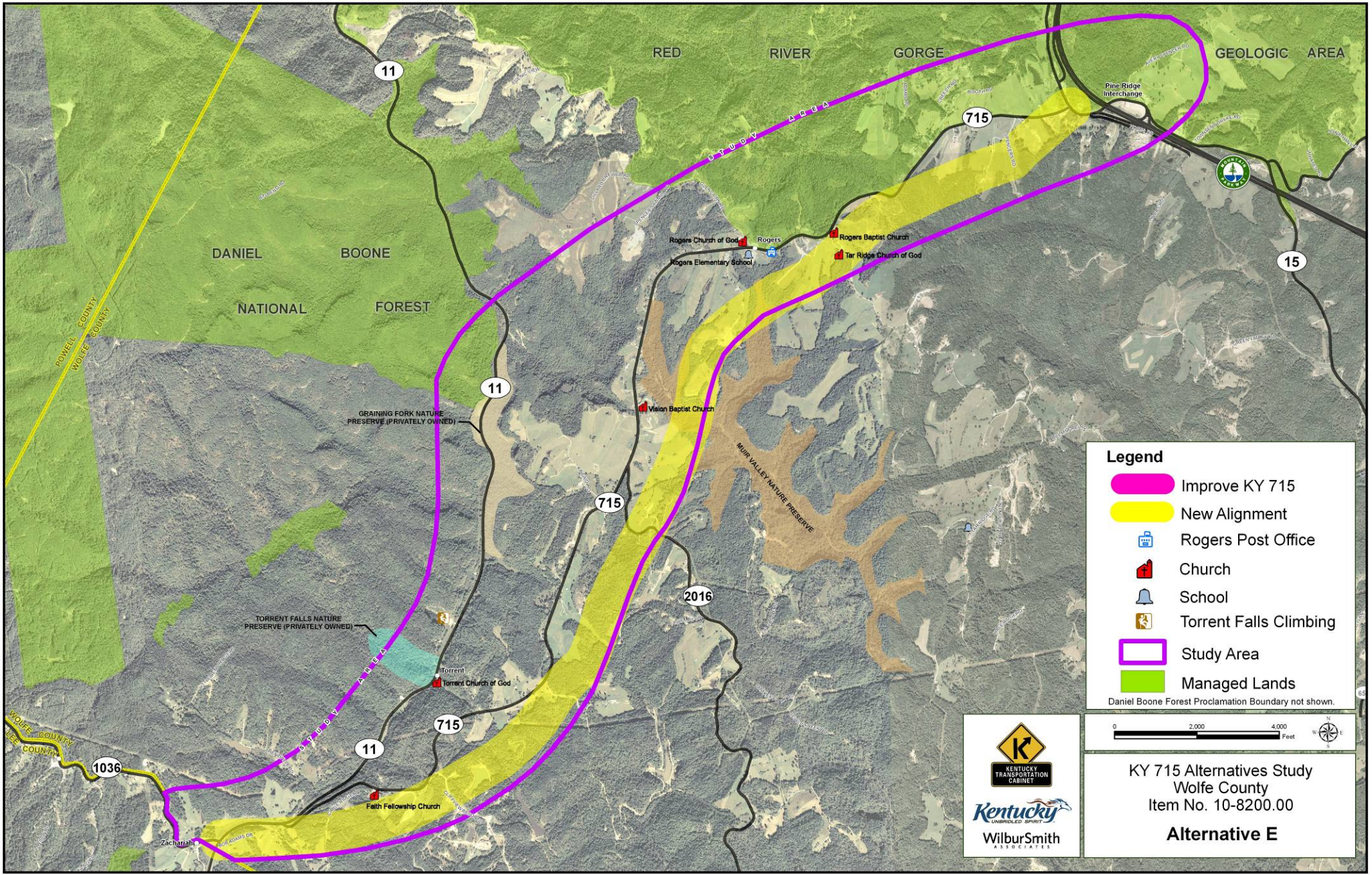

**Kentucky**  
COMMONWEALTH OF KENTUCKY







KY 715 Alternatives Study  
Wolfe County  
Item No. 10-8200.00

**Alternative D**





**Legend**

-  Improve KY 715
-  New Alignment
-  Rogers Post Office
-  Church
-  School
-  Torrent Falls Climbing
-  Study Area
-  Managed Lands

Daniel Boone Forest Proclamation Boundary not shown.




**Kentucky**  
COMMONWEALTH OF KENTUCKY

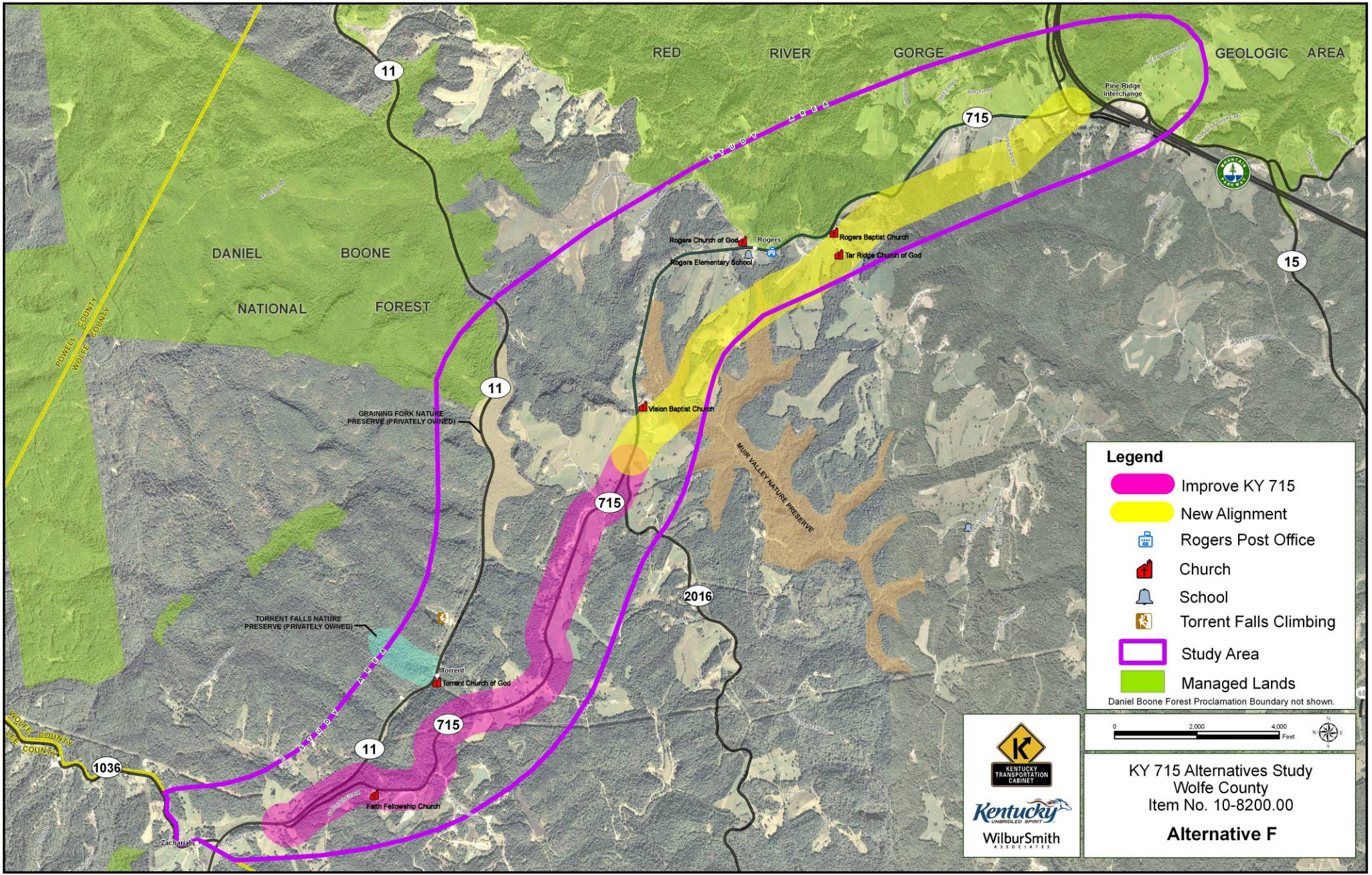


**WilburSmith**  
ASSOCIATES

KY 715 Alternatives Study  
Wolfe County  
Item No. 10-8200.00

**Alternative E**





**Legend**

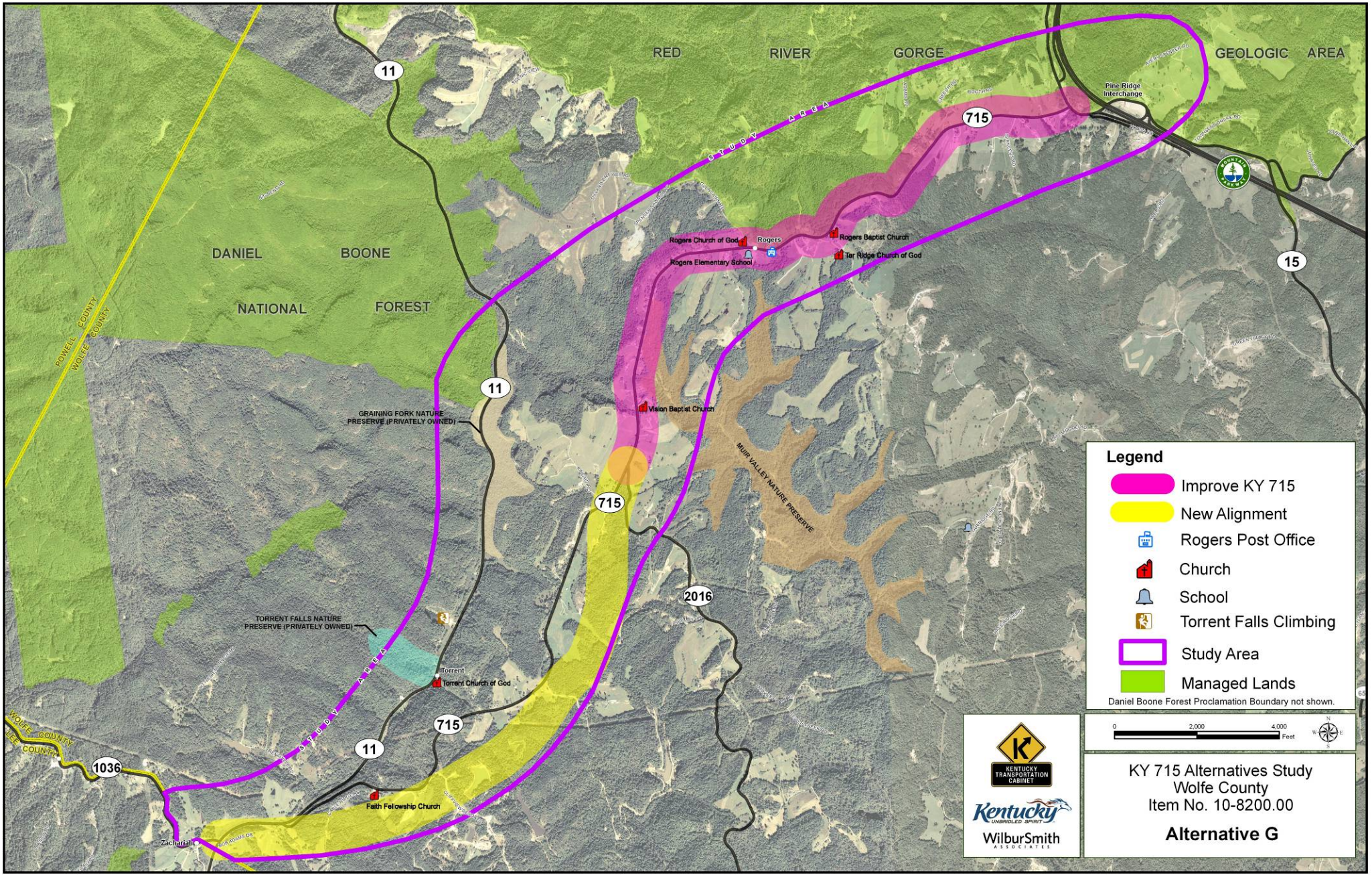
- Improve KY 715
- New Alignment
- Rogers Post Office
- Church
- School
- Torrent Falls Climbing
- Study Area
- Managed Lands

Daniel Boone Forest Proclamation Boundary not shown.



KY 715 Alternatives Study  
 Wolfe County  
 Item No. 10-8200.00  
**Alternative F**





**Legend**

- Improve KY 715
- New Alignment
- Rogers Post Office
- Church
- School
- Torrent Falls Climbing
- Study Area
- Managed Lands

Daniel Boone Forest Proclamation Boundary not shown.

0 2,000 4,000 Feet

**KY 715 Alternatives Study**  
**Wolfe County**  
**Item No. 10-8200.00**

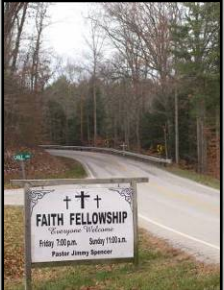
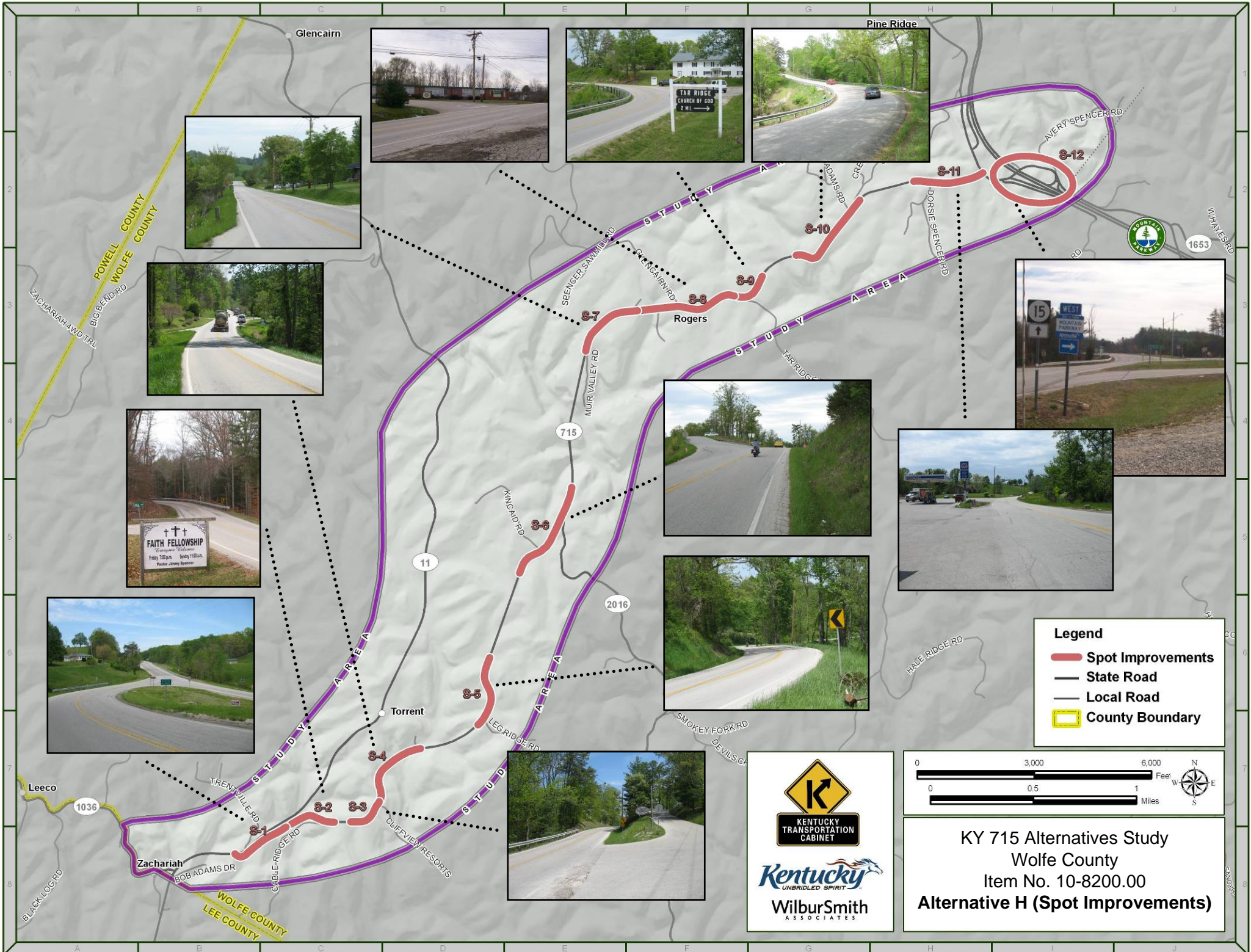
**Alternative G**

  
 KENTUCKY  
 TRANSPORTATION  
 CABINET

  
 Kentucky  
 COMMONWEALTH OF KENTUCKY

  
 WilburSmith  
 ASSOCIATES





**Legend**

- Spot Improvements
- State Road
- Local Road
- County Boundary

0 3,000 6,000 Feet  
 0 0.5 1 Miles

KENTUCKY  
TRANSPORTATION  
CABINET

*Kentucky*  
UNBROKEN SPIRIT

WilburSmith  
ASSOCIATES

KY 715 Alternatives Study  
 Wolfe County  
 Item No. 10-8200.00  
**Alternative H (Spot Improvements)**